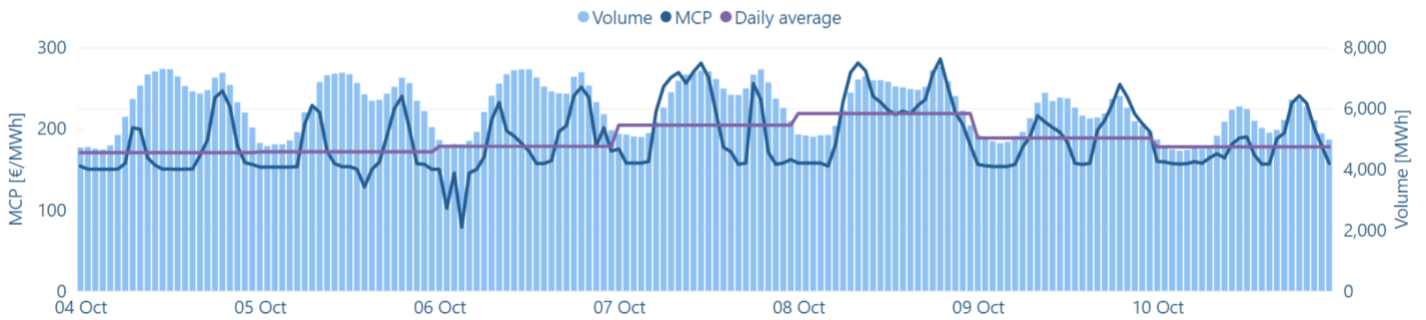


MCP
187.05 €/MWh

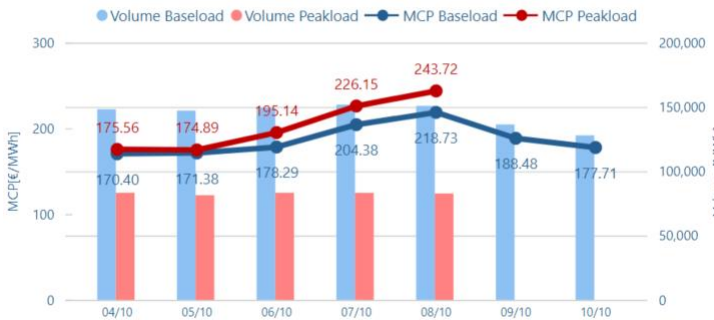
Volume
1,012 GWh

Value
192.5 M€

Hourly MCP & Volume



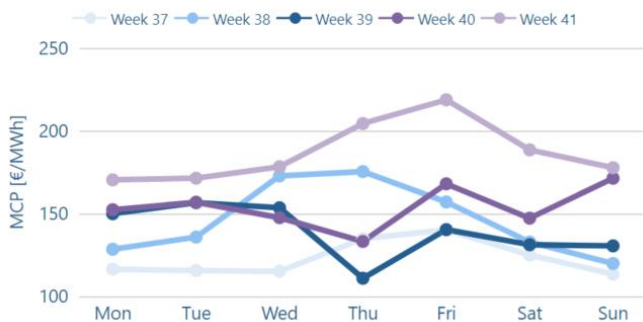
Daily MCP & Volume



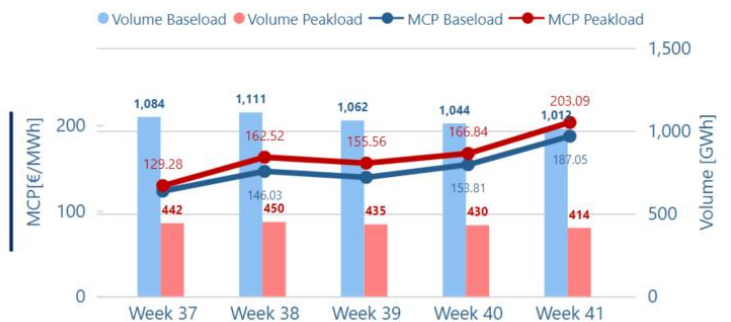
Data table

Delivery Date	MCP BL [€/MWh]	MCP PL [€/MWh]	Volume BL [MWh]	Volume PL [MWh]
04/10	170.40	175.56	148,252	83,307
05/10	171.38	174.89	147,219	81,446
06/10	178.29	195.14	149,238	83,290
07/10	204.38	226.15	151,789	83,240
08/10	218.73	243.72	150,888	82,750
09/10	188.48	-	136,442	-
10/10	177.71	-	127,939	-

MCP per Weekday



Weekly MCP & Volume



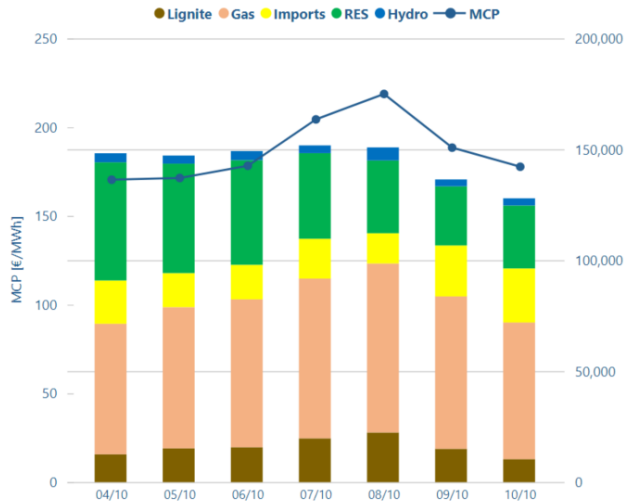
Day Ahead Electricity Market-Greek Bidding Zone

Week 41

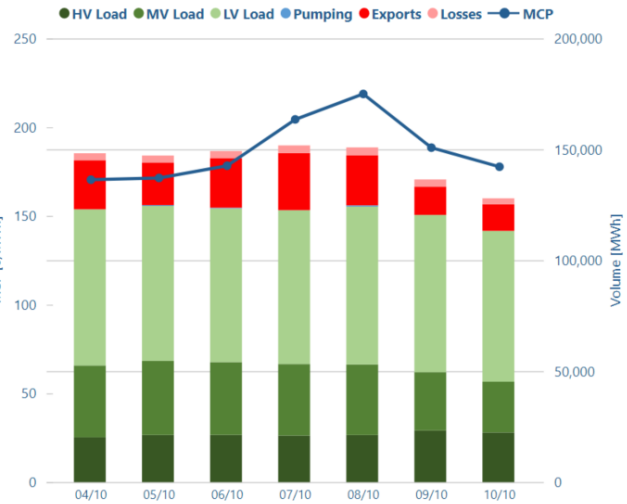
04/10/2021

- 10/10/2021

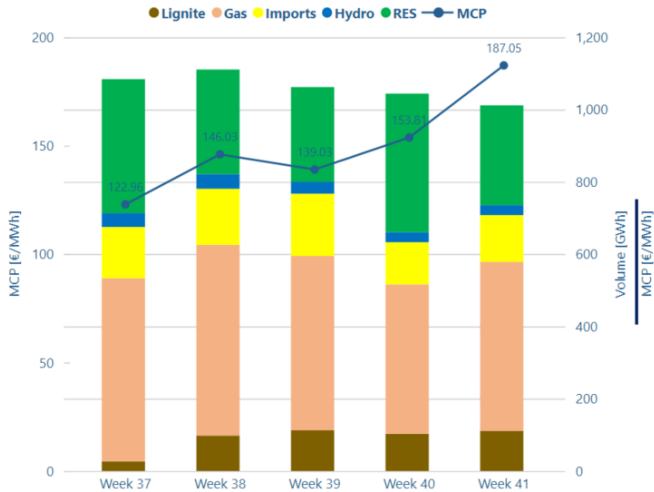
Daily Supply Mix



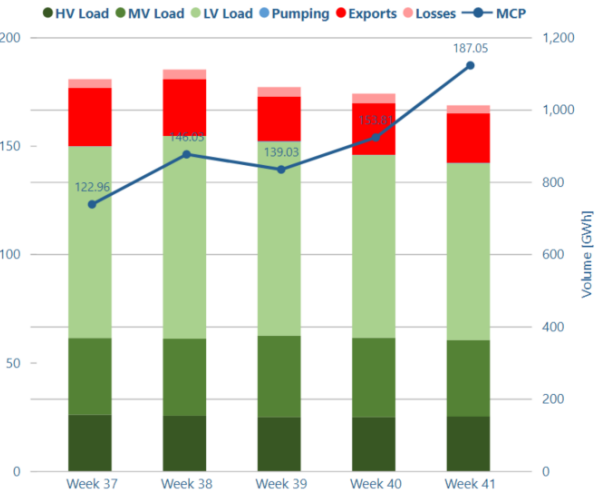
Daily Demand Mix



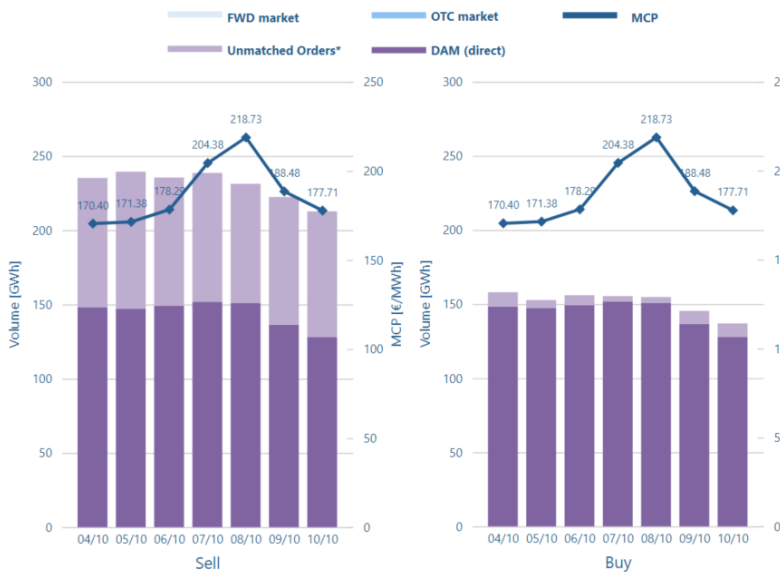
Weekly Supply Mix



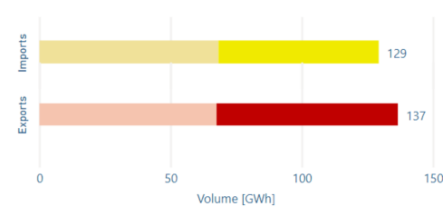
Weekly Demand Mix



Unmatched orders & traded volume



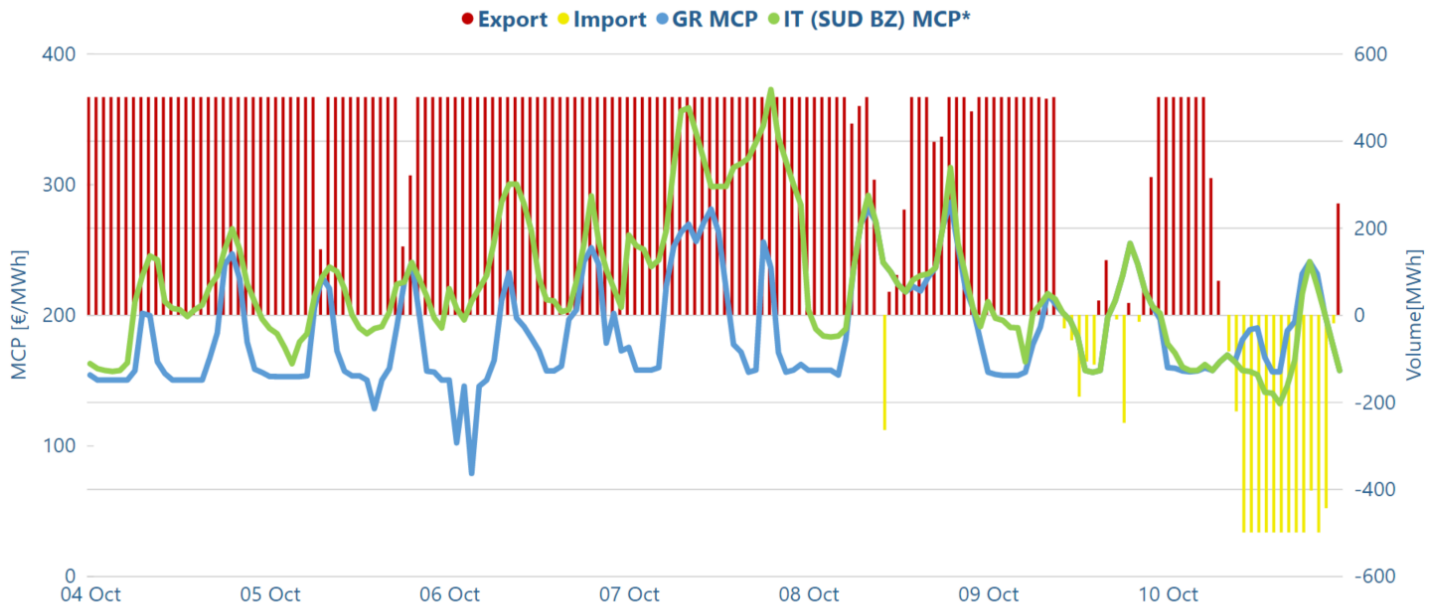
Cross Borders Volumes



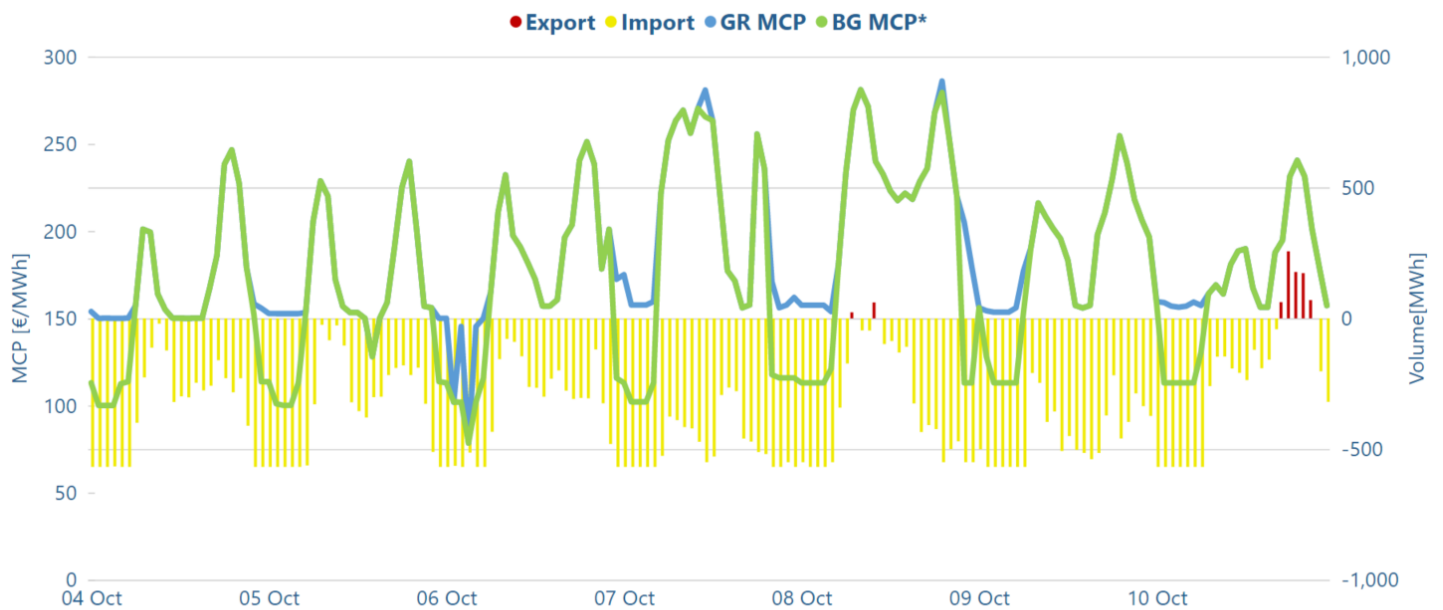
*The unmatched orders include all orders that have not been included in the algorithm (excluding block orders for sell side)

Exports-Implicit Allocation Imports-Implicit Allocation

Market Coupling Cross Border Flow

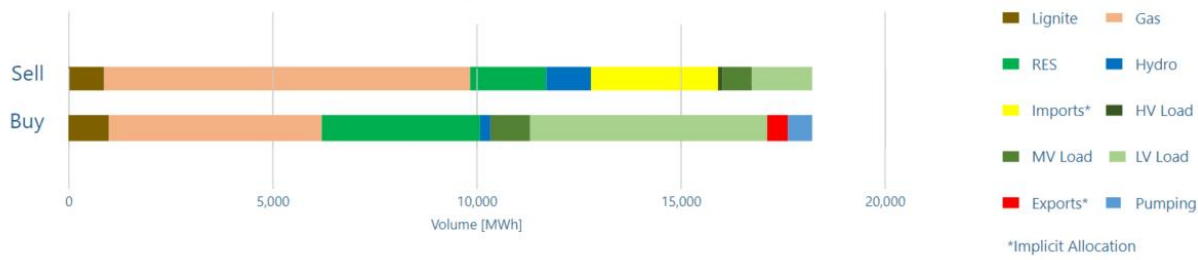


*Datasource for IT (SUD BZ) MCP: <http://www.mercatoelettrico.org/En/Esiti/MGP/EsitiMGP.aspx>

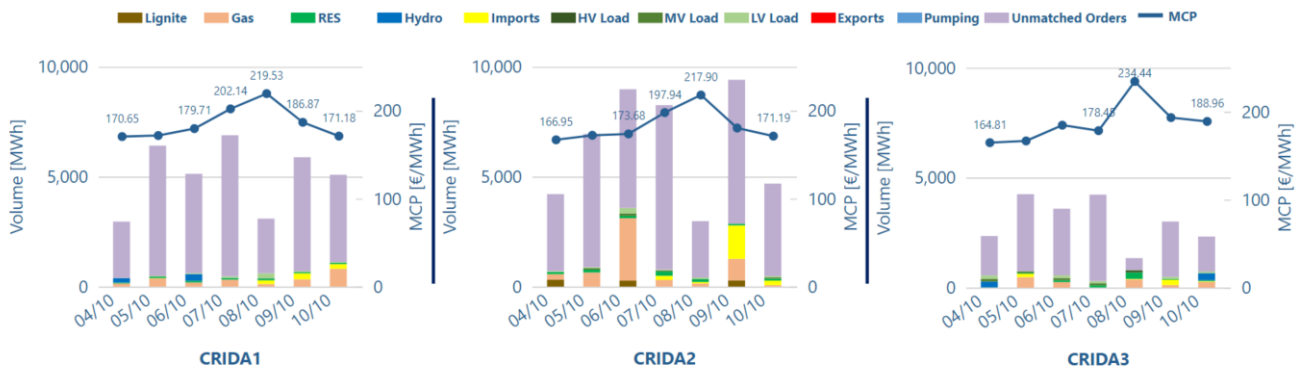


*Datasource for BG MCP: <https://ibex.bg/markets/dam/dam-market-segment/>

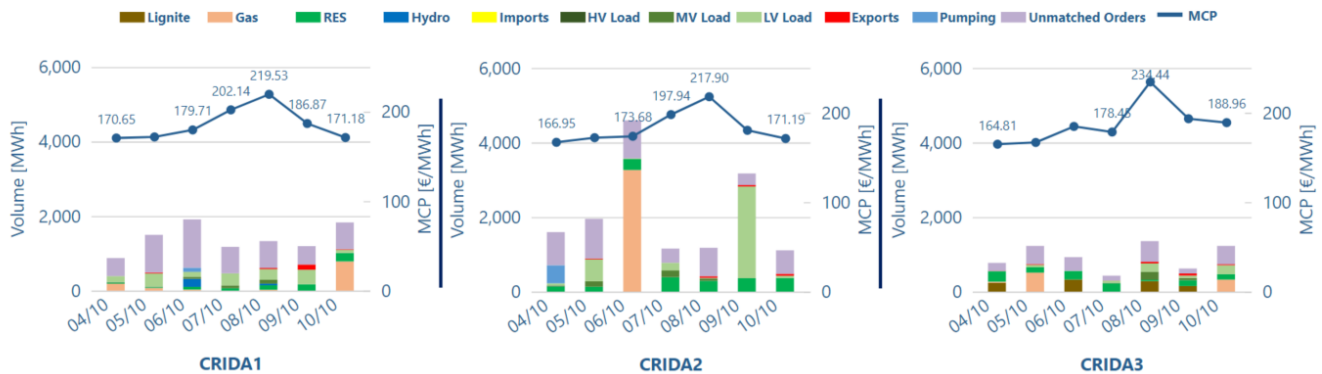
Aggregated traded volume



MCP, Volume & unmatched orders for Sell Side



MCP, Volume & unmatched orders for Buy Side



MCP per Weekday

